



AURA®
WATERBORNE INTERIOR
PAINT & PRIMER MATTE N522



Waterborne, interior, latex acrylic paint with revolutionary „ColorLock® Technology”, which creates elegant, the most durable, matte finish with exceptional color depth, excellent hiding power and resistance to washing and wet-scrubbing.



BENEFITS & GENERAL DESCRIPTION:

Waterborne, latex acrylic paint is part of an innovative paint and colorant system integrating the best technologies combined in one **revolutionary, patented „ColorLock® Technology”**.

For the first time in the history Benjamin Moore showed the real colors.

Innovative system ensures exceptional depth and color resistance as well as the extraordinary performance properties. Paint sets the new standards and distinguishes Aura® product family from virtually other paint on the market, shifting the acrylic paint quality to the highest level. All thanks to specific microcapsules with the colorants particles closed inside.

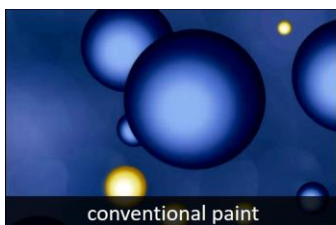
AURA® WATERBORNE INTERIOR PAINT & PRIMER MATTE N522 is users safe and environmental friendly in trace VOC* content formula.

Paint is intended for decorative and protective painting of interior walls and ceilings, as well as additional elements like doors, trims, cabinets, cornices, rosettes in apartments, private houses, health care facilities, commercial objects, public utility facilities and food industry objects.

The product characterizes **extreme hiding power (max. 2 coats), exceptional resistance to washing and wet-scrubbing - class 1 according to Standard PN-EN 13300, superior stain and mildew resistance, exceptional flow and leveling properties, incredible color retention** (under the influence of UV radiation), quick drying time and low odor. Product meets the LEED® v4 requirements.



„ColorLock® Technology” – revolutionary technology. THE NEW DIMENSION OF COLOR!



conventional paint



ColorLock® Technology


In conventional paint the particles of colorants adhere loosely to the resin molecules.

Our **exclusive ColorLock® Technology** microscopically bonds the highest quality color pigments tightly to the paint for extraordinary results. Color pigments are locked into the paint film (and protected), forming the specific microcapsules.

„ColorLock® Technology” ensures the most elegant finish which presents the exceptional color depth, highest color retention, durability and excellent washability.

PROPERTIES:

- **exceptional depth and retention of color due to „ColorLock® Technology”**
- **extreme hiding power – max. 2 coats**
- **exceptional resistance to washing and wet-scrubbing - class 1 according to Standard PN-EN 13300**
- **easy stains removing**
- **ecological formula with trace VOC* content – „Benjamin Moore’s GREEN PROMISE®”**
- **meets LEED® v4 requirements**
- **mildew resistant coating**
- **excellent durability in time**
- **exceptional flow and leveling properties**
- **easy application and spatter-resistant**
- **quick drying time**

Technical information – Pastel Base 1X	
vehicle type:	hybrid acrylic dispersions system
pigment type **:	titanium dioxide
volume solids**:	47,3 %
coverage:	approx. 12 m ² /l for one coat depending on surface texture, porosity and absorbing properties, application method and painting tool used. Test should be performed in order to determine the coverage of the given surface.
recommended film thickness:	
- wet	109 µm
- dry	53 µm
dry time (at temp. + 25°C and relative air humidity 50%):	
- to touch:	min. 1 hours
- to recoat (the next coat application):	min. 1 hours
- full cure and final technical parameters and durability:	min. 14 days
dries by:	evaporation and coalescence
viscosity **:	98 ± 4 KU
flash point:	none
gloss/sheen:	matte (3-6 @ 85°)
colors:	Bases 1X, 2X, 3X, 4X intended for tinting in the GENNEX® Platform system. Important: white color is achieved by tinting base 1X. Only GENNEX® Waterborne Colorants can be added to Aura® paint. Full range of Benjamin Moore colors including also „Affinity™“, „Color Stories™“ and „Williamsburg™“ color collections.
wet scrubbing - testing according to PN-EN ISO 11998, classification according to PN-EN 13300 Standard:	Class 1
reaction to fire:	Class A (0-25) over non-combustible surfaces when tested in accordance with ASTM E-84.
painted surface temperature:	min +10°C, max. +32°C
thin with:	not recommended, if needed use clean water
clean up thinner:	clean water
weight per 1 l **:	1,37 kg
storage temperature:	min. +5°C, max. +32°C
VOC:	* Product with trace VOC content according to "The European Council of the Paint, Printing Ink, and Artist's Colours Industry" (CEPE) and "British Coating Federation" guidelines. EU VOC limit for this product (Cat. A/a): 30 g/l (2010). Max. VOC: 1 g/l.
Natural environment protection/ecology:	<div style="display: flex; align-items: center;">  <div> <p>• Product qualifies for: LEED® v4, Green Seal™ GS-11 2015 Standard, CDPH Emission Certified, CHPS low emitting credit (Collaborative for High Performance Schools).</p> <p>Benjamin Moore's Green Promise® designation is our company's assurance that this product meets – and often exceeds – rigorous environmental and performance criteria regarding VOCs, emissions, application, technical parameters and packaging, while also delivering the premium levels of performance you expect from Benjamin Moore.</p> </div> </div>
COMPLIANCE & CERTIFICATIONS:	Master Painter Institute 142, 143 and MPI X-Green™ 142, 143, OTC, OTC II, CARB, CARB07, CARB19, UTAH, AZMC, SCAQMD.
packaging**:	0,95 l; 3,78 l; 18,9 l (only Base 1X)

** reported values are for Pastel Base 1X and can be different in case of other Bases.

***3,78 L = 1 gallon; 0,95 L = ¼ gallon

RECOMMENDED FOR

Range of use: traditional cement-lime and cement plasters, thin-layered mineral and acrylic plasters, high quality gypsum filling materials, gypsum substrates, dry walls, wallpapers, construction building blocks, concrete, latex paint coats renovation, wood and wooden-like surfaces. It's also possible to apply the paint to previously painted metal substrates and prepared and primed with a special adhesion primer glass, ceramic tiles or glass-fiber.

Surface preparation:

• new (not painted before) surfaces:

New cement-lime and cement plasters and concrete must be allowed to cure at least 4 weeks. Surfaces finished with gypsum fillers or plasters can be decorated after their full drying and curing. Remove dirt, dust, wax, grease and oil spots and loose or weak parts of substrate. All imperfections and cracks must be filled with a special patching compound, similar to original used one. Remove microorganisms (e.g. fungus and mildew) using a special agent. Prime the substrate according to below recommendations:

Walls and ceilings prime with one from the following products: SUPER HIDE® ZERO VOC INTERIOR LATEX PRIMER 354 or FRESH START® HIGH-HIDING ALL PURPOSE PRIMER 046.

In case of weak substrate in order to its reinforcement, before one of mentioned primer application use a primer COROTECH® CLEAR ACRYLIC SEALER V027 or ULTRA SPEC® MASONRY INTERIOR/EXTERIOR 100% ACRYLIC SEALER 608 00 CLEAR.

On some difficult substrates with some spots and stains use a special priming paint FRESH START® HIGH-HIDING ALL PURPOSE PRIMER 046.

Wooden and wooden-like substrates: FRESH START® HIGH-HIDING ALL PURPOSE PRIMER 046.

Warning: the priming is a technological requirement in case of not primed or not painted substrates.

Before the Aura® paint in some intense red or yellow colors application, use FRESH START® HIGH-HIDING ALL PURPOSE PRIMER 046 in Deep Base 04.

• previously painted surfaces:

Remove dirt, dust, wax, grease and oil spots, all paint layers and loose or weak parts of the substrate. The glossy surfaces must be dulled. All imperfections and cracks must be filled with a special patching compound, similar to

original used one. Remove microorganisms (e.g. fungus and mildew) using a special agent.

In case of old paint layers renovation the test should be performed on small surface area. Positive result, decides on application of the product on the whole surface.

The priming is not necessary if existing coat is in an excellent condition. Exposed parts of substrate also those after the reparation must be primed with a proper primer from Benjamin Moore & Co. offer.

Walls and ceilings prime with one from the following products: SUPER HIDE® ZERO VOC INTERIOR LATEX PRIMER 354 or FRESH START® HIGH-HIDING ALL PURPOSE PRIMER 046.

Wooden and wooden-like substrates: in case of partially reparations (small holes, mechanical damages, cracks, etc.) prime repaired places with FRESH START® HIGH-HIDING ALL PURPOSE PRIMER 046.

Metal surfaces: in the most cases priming is not necessary. Apply 1-2 coats of AURA® WATERBORNE INTERIOR PAINT & PRIMER MATTE N522.

Warning: the priming is a technological requirement in case of not primed or not painted substrates.

Before the Aura® paint in some intense colors application, use FRESH START® HIGH-HIDING ALL PURPOSE PRIMER 046 in Deep Base 04.

● **wallpapered surfaces:** remove all wallpapers with a weak adherence to the substrate, remove old adhesive, sand, remove dust and glue using the proper adhesive. Remove dirt, dust, wax, grease and oil spots from wallpapers and prime with SUPER HIDE® ZERO VOC INTERIOR LATEX PRIMER 354 or FRESH START® HIGH-HIDING ALL PURPOSE PRIMER 046.

Warning: use a primer in the color similar to the top coat (if there is a technical possibilities; see the details in TDSs of selected primer).

Before the Aura® paint in some intense colors application, use FRESH START® HIGH-HIDING ALL PURPOSE PRIMER 046 in Deep Base 04.

In case of problematic and untypical surfaces like ceramic tiles, plastics, glass, glossy paint layer, etc., use adhesion priming paint STIX® WATERBORNE BONDING PRIMER SXA-110 INSL-X brand.

APPLICATION

The substrate must be solid, completely dry, clean and free of dust. The paint is in ready to use form. Stir thoroughly before and during use. Apply one or two coats after min. 4 hours from priming with SUPER HIDE® ZERO VOC INTERIOR LATEX PRIMER 354, min. 12 hours in case of COROTECH® CLEAR ACRYLIC SEALER V027 or ULTRA SPEC® MASONRY INTERIOR/EXTERIOR 100% ACRYLIC SEALER 608 00 CLEAR and min. 24 hours in case of use FRESH START® HIGH-HIDING ALL PURPOSE PRIMER 046.

In case of use STIX SXA-110 provide the min. time interval 24 hours. to 7 days (see the details in TDS of mentioned primer) before AURA® WATERBORNE INTERIOR PAINT & PRIMER MATTE N522 application.

Apply with brush, roller or spraying gun. For airless method provide the following parameters: pressure 69÷138 bar and tip 0.013-0.017. We recommend the AURA® Roller for best results.

Work using „wet in wet” system (that is, continuously, not allowing the paint to dry out when painting with a roller), avoiding creating overlaps.

AURA® WATERBORNE INTERIOR PAINT & PRIMER MATTE N522 offers excellent flow and leveling. Do not over brush in the attempt to smooth our brush marks.

If your edges begins to dry or you see that you missed a spot and the paint is already setting up, allow it to dry completely (min. 60 minutes) before touching up that area.

The next coat apply after min. 1 hour. Technological breaks must be planned at the wall corners or other elements.

When painting job is conducted in high temperature, the relative air humidity below 45%, in direct sunlight or windy conditions add 518 EXTENDER to AURA® paint in the amount of max. 235 ml to 3,78 l paint. It's possible also to add some clean water in the same amount. Never add other paints or solvents.

Do not apply on the substrates painted previously with limewash or glue paints.

It is recommended to use BENJAMIN MOORE or PREMIER painting tools and Frogtape® (with PaintBlock Technology®), KIP® or Painter's Matte Green® masking tapes.

Weather conditions during and after application: carry out the painting work at the air and substrate temperature > +10°C. The optimal conditions: + 20°C and relative air humidity 50%.

Drying time: at the temperature of +25°C and relative air humidity 50% the paint dries approx. 1 hour. At mentioned weather conditions the next coat apply after min. 1 hour.

Clean up: wash painting tools in warm soapy water immediately after use.

Warning: Use system: paint AURA® WATERBORNE INTERIOR PAINT & PRIMER MATTE N522 and primers from Benjamin Moore & Co. offer. Ensure enough amount of paint from one production batch in order to avoid some color differences. Do not use Bases 1X, 2X, 3X i 4X not tinted in GENNEX® Platform system.

Only GENNEX® Waterborne Colorants can be added to AURA® paint. The coat achieves the final parameters and resistance to washing with water after min. 14 days after application. In case of some colors it's possible to observe the phenomenon of slight color wash-off from the paint layer which do not have any negative influence on the final technical parameters and the esthetic effect. The paint is not resistant to strong mechanical abrasion, which causes damages of paint layer and substrate. Producer is not responsible for bad quality of the painted surface if the above instructions aren't obeyed. Producer is not responsible for the damages appeared in results of use over 3,78 l of paint, because to this quantity any defects of product should be demonstrated and notified in the proper point of sale.

ENVIRONMENTAL, HEALTH & SAFETY INFORMATION:



MSDS available on demand of consumer.

WARNING

Contains 2-Methyl-4-isothiazolin-3-one.

Hazard statements

H317 - May cause an allergic skin reaction.

EUH208 - Contains (1,2-Benzisothiazolin-3-one). May produce an allergic reaction

EUH211 - Warning! Hazardous respirable droplets may be formed when sprayed. Do not breathe spray or mist.

Precautionary Statements - EU (§28, 1272/2008)

P101 - If medical advice is needed, have product container or label at hand.

P102 - Keep out of reach of children.

P261 - Avoid breathing dust/fume/gas/mist/vapours/spray.

P280 - Wear protective gloves.

P321 - Protect against consumption. If swallowed, seek medical advice immediately - show the packaging or label.

P501 - Do not pour liquid residues into sewerage systems. They should be referred to specialized companies with appropriate authorization for disposal. Empty cans and liquid waste should be recycled or disposed of in accordance with local regulations.

FIRST AID: In case of eye contact, flush immediately with plenty of water for at least 15 minutes; for skin, wash thoroughly with soap and water. If symptoms persist, seek medical attention. If you experience difficulty breathing, leave the area to obtain fresh air. If continued difficulty is experienced, get medical attention immediately.

EXPIRE DATE: 4 years from the production date in the factory-sealed package The expire date is indicated on the packaging.

CERTIFICATES: the product is qualified with Hygienic Certificate.



This specification is effective from: 10.2024.

B.M. Polska Sp. z o. o. guarantee the higher product quality, however can not control the way of its application. The producer is not responsible for the work of Designer and Contractor. The information presented in this technical data sheet were given in good faith, in accordance with the current state of knowledge and practical experience. It does not relieve you of responsibility for carrying out work in accordance with the building construction rules as well as health and safety regulations.

B. M. Poland Sp. z o. o. is not liable for any damage and defects caused by the combined use of the offered products with materials from the portfolio of other manufacturers, as well as in the event of any recipe changes by buyers and users.

B.M Polska Sp. z o. o. reserves the right to change the content in subsequent editions of the technical data sheet without prior notification of the fact to the Clients and full right to modify the products as part of their technological development.

PRODUCER: Benjamin Moore & Co., 101 Paragon Drive, Montvale, NJ 07645, USA, tel. (201) 573 9600, www.benjaminmoore.com
EXCLUSIVE REPRESENTATIVE: B.M. Polska Sp. z o.o., ul. Polczyrska 100, 01-302 Warszawa, tel. +48 22 533 52 90, fax. +48 22 533 52 99 www.benjaminmoore.pl www.bmpolska.com