



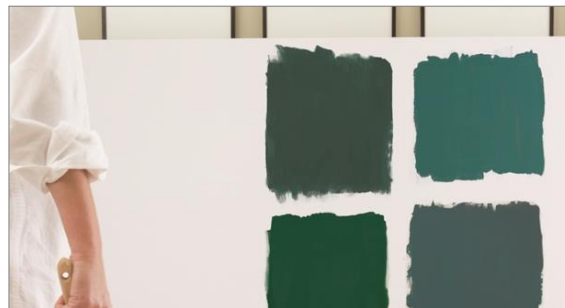
Color tester in form of waterborne, latex acrylic paint which make color choices much easier. Eggshell.

BENEFITS & GENERAL DESCRIPTION:

COLOR SAMPLES 127 is color tester in form of waterborne, latex acrylic paint, creating eggshell finish.

Product allows to "try on" a paint color before you commit to the time and expense of painting wall, ceiling or entire room. Interior designers and professional painters do a "brush out" when deciding on color.

This entails applying paint to a small section of the wall or several walls to see how the color looks in the actual environment or under various lighting conditions.



Note: the *COLOR SAMPLES 200* is not intended for touch-up or regular painting. The final color of paint applied on the wall can slightly differs from the same shade tried on base of *COLOR SAMPLES 200*.

The mentioned difference can be especially visible in case of choice flat paints in compare to *COLOR SAMPLES 200* eggshell finish.

PROPERTIES:

- *color tester allows to "try on" a paint color before painting of wall, ceiling or entire room*
- *it helps to save you time and money*
- *great color tool for designers and homeowners*
- *high hiding power*
- *quick drying*

| Technical information – Pastel Base 1X | |
|--|--|
| vehicle type: | acrylic dispersion |
| pigment type *: | titanium dioxide |
| coverage: | approx. 5-6 m ² /packaging for one coat depending on surface texture, porosity and absorbing properties, application method and painting tool used. Test should be perform in order to determine the coverage of the given surface. |
| dry time (at temp. + 25°C and relative air humidity 50%): | |
| - to touch: | min. 1 hours |
| - to recoat (the next coat application): | min. 2 hours |
| - full cure and final technical parameters and durability: | min. 14 days |
| dries by: | evaporation and coalescence |
| flash point: | none |
| gloss/sheen: | eggshell (15-25 @ 85°) |
| colors: | Bases 1X, 2X, 3X, 4X intended for tinting in the GENNEX® Platform system. Full Benjamin Moore color range. |
| painting surface temperature: | min +10°C, max. +32°C |
| thin with: | not recommended, if needed use clean water |
| clean up thinner: | clean water |
| weight per 1 l *: | 1,32 kg |
| storage temperature: | min. +5°C, max. +32°C |
| VOC: | EU VOC limit for this product (Cat. A/a): 30 g/l (2010). Max. VOC: < 30 g/l. |
| packaging: | 0,24 l; |

* reported values are for Pastel Base 1X and can be different in case of other Bases.

RECOMMENDED FOR

Range of use: primed or painted before walls and ceilings. The *COLOR SAMPLES 200* is not intended for touch-up or regular painting.

Surface preparation:

• **new surfaces:**

New cement-lime and cement plasters and concrete must be allowed to cure at least 4 weeks. Surfaces finished with gypsum fillers or plasters can be decorated after their full drying and curing. Remove dirt, dust, wax, grease and oil spots and loose or weak parts of substrate. All imperfections and cracks must be filled with a special patching compound, similar to original used one. Remove microorganisms (e.g. fungus and mildew) using a special agent. Prime the substrate according to below recommendations:

Walls and ceilings prime with one from the following products: SUPER HIDE® ZERO VOC INTERIOR LATEX PRIMER 354 or FRESH START® HIGH-HIDING ALL PURPOSE PRIMER 046.

In case of weak substrate in order to its reinforcement, before one of mentioned primer application use a primer COROTECH® CLEAR ACRYLIC SEALER V027.

On some difficult substrates with some spots and stains use a special priming paint FRESH START® HIGH-HIDING ALL PURPOSE PRIMER 046/046 04.

Warning: the priming is a technological requirement in case of not primed or not painted substrates.

● **previously painted surfaces:**

Remove dirt, dust, wax, grease and oil spots, all paint layers and loose or weak parts of the substrate. The glossy surfaces must be dulled. All imperfections and cracks must be filled with a special patching compound, similar to original used one. Remove microorganisms (e.g. fungus and mildew) using a special agent.

In case of old paint layers renovation the test should be performed on small surface area. Positive result, decides on application of the product on the whole surface.

The priming is not necessary if existing coat is in an excellent condition. Exposed parts of substrate also those after the reparation must be primed with a proper primer from Benjamin Moore & Co. offer.

Walls and ceilings prime with one from the following products: SUPER HIDE® ZERO VOC INTERIOR LATEX PRIMER 354 or FRESH START® HIGH-HIDING ALL PURPOSE PRIMER 046.

APPLICATION

The substrate must be solid, completely dry, clean and free of dust, primed or painted before. The paint is in ready to use form. Stir thoroughly before and during use. Apply one or two coats after min. 4 hours from priming with SUPER HIDE® ZERO VOC INTERIOR LATEX PRIMER 354, min. 12 hours in case of COROTECH® CLEAR ACRYLIC SEALER V027 and min. 24 hours in case of use FRESH START® HIGH-HIDING ALL PURPOSE PRIMER 046.

Apply 1 or 2 coats with brush or roller. Work using „wet in wet” system, avoiding creating overlaps.

The next coat apply after min. 2 hour. Technological breaks must be planned at the wall corners or other elements.

Do not apply on the substrates painted previously with limewash or glue paints.

Completely dry and cured COLOR SAMPLES 200 paint layer can be overpaint with waterborne paints from Benjamin Moore & Co. offer. In some cases it is recommended to sand the edges of the squares painted with COLOR SAMPLES 200 to avoid the differences in the surfaces levels which can be visible after the final paint application.

It is recommended to use BENJAMIN MOORE or PREMIER painting tools and FrogTape® (with PaintBlock Technology®), KIP® or Painter's Matte Green® masking tapes.

Weather conditions during and after application:

Carry out the painting work at the air and substrate temperature > +10°C. The optimal conditions: + 20°C and relative air humidity 50%.

Drying time:

At the temperature of +25°C and relative air humidity 50% the paint dries approx. 1 hour. At mentioned weather conditions the next coat apply after min. 2 hour. The coat achieves the final parameters and resistance to washing with water after min. 14 days after application.

Clean up:

Wash painting tools in warm soapy water immediately after use.

Warning: The COLOR SAMPLES 200 is not intended for touch-up or regular painting. The final color of paint applied on the wall can slightly differs from the same shade tried on base of Color Samples 200 and the color presented in color card. The mentioned difference can be especially visible in case of choice flat paints in compare to Color Samples 200 eggshell finish.

Use system: paint COLOR SAMPLES 200 and primers and/or paints from Benjamin Moore & Co. offer. Do to mix with other products. Ensure enough amount of paint from one production batch in order to avoid some color differences.

Do not use Bases not tinted in GENNEX® Platform system. In case of some lighter colors, due to the limited can size, it can not be possible to tint COLOR SAMPLE 200.

The coat achieves the final parameters and resistance to washing with water after min. 14 days after application.

Producer is not responsible for bad quality of the painted surface if the above instructions aren't obeyed. Producer is not responsible for the damages appeared in results of use over 0,24 l of paint, because to this quantity any defects of product should be demonstrated and notified in the proper point of sale.

ENVIRONMENTAL: Do not pour liquid residues into sewerage systems. They should be referred to specialized companies with appropriate authorization for disposal.

Empty cans and liquid waste should be recycled or disposed of in accordance with local regulations.

HEALTH & SAFETY INFORMATION: Do not eat. Keep out of reach of children. Avoid contact with eyes and prolonged contact with skin. In case of eye contact, flush immediately with plenty of water. In case of ingestion clean mouth with water and afterwards drink plenty of water. Consult a physician; show this container or label. Do not breathe spray mist or sanding dust. Use only with adequate ventilation. Ensure fresh air entry during application and drying. During application in closed spaces, wear the protective clothing, gloves and eye/face protection. In case of spraying method wear approved respirator. MSDS available on demand of consumer.

EXPIRE DATE: 4 years from the production date in the factory-sealed package The expire date is indicated on the packaging.

CERTIFICATES & APPROVALS:

- The product is qualified with Hygienic Certificate.



This specification is effective from: 06.2022.

B.M. Polska Sp. z o. o. guarantee the higher product quality, however can not control the way of its application. The producer is not responsible for the work of Designer and Contractor. The information presented in this technical data sheet were given in good faith, in accordance with the current state of knowledge and practical experience. It does not relieve you of responsibility for carrying out work in accordance with the building construction rules as well as health and safety regulations.

B. M. Poland Sp. z o. o. is not liable for any damage and defects caused by the combined use of the offered products with materials from the portfolio of other manufacturers, as well as in the event of any recipe changes by buyers and users.

B.M Polska Sp. z o. o. reserves the right to change the content in subsequent editions of the technical data sheet without prior notification of the fact to the Clients and full right to modify the products as part of their technological development.

PRODUCER: Benjamin Moore & Co., 101 Paragon Drive, Montvale, NJ 07645, USA, tel. (201) 573 9600, www.benjaminmoore.com
EXCLUSIVE REPRESENTATIVE: B.M. Polska Sp. z o.o., ul. Polczyńska 100, 01-302 Warszawa, tel. + 48 22 533 52 90, fax. +48 22 533 52 99 www.benjaminmoore.pl www.bmpolska.com